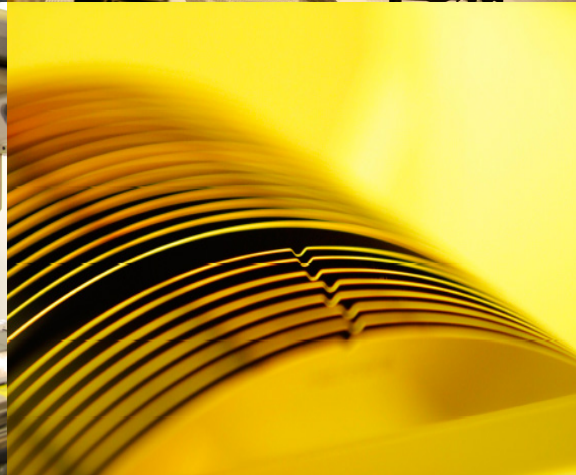


DISCOVER



COLLABORATE. SUCCEED.

Global leaders in the Microelectronics Industry, University Research Centres, state-of-the-art equipment technology, targeted outreaching, skills and knowledge... key elements in fostering collaboration and synergy among all parties, resulting in the rapid commercialization of value-added products.

WELCOME TO C2MI



WHAT IS C2MI ?

The C2MI is an international reference in the fields of advanced packaging and microsystems. It is the fundamental link between applied research and the rapid commercialization of microelectronic products.

Microelectronics is omnipresent. It is found in many applications - transport, health, telecommunication, etc. - and in the composition of various objects - computer, smart phones, car airbags, electric meters, implants and moreover. In an environment of rapid technological change, microelectronics is emerging and is an important strategic economic sector.

The C2MI is a centre of excellence for commercialization and research (CECR) whose role is to help produce market-driven prototypes in the fields of applications of the information and communication technologies, automobile, aerospace as well as environment and health to accelerate their commercialization.

HERE IS AN OVERVIEW OF C2MI

- C2MI's impact
- 2016-2017 Highlights Report
- C2MI's laboratories
- Technical datasheets

FOR MORE INFORMATION

www.c2mi.ca

ECONOMIC IMPACT

2012-2017

48.1M\$ in capital investments by the members.



445 industrial projects.



231M\$ invested in R&D.

270

Near **270** new markets addressed.



80 industry-university collaboration projects worth **17.8M\$**.



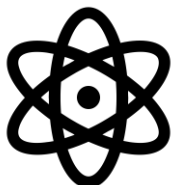
More than **185** patents and industrial secrets obtained.

104 pending patents.
31 intellectual property agreement.



More than **365** HQP trained according to industry standard.

More than **100** professors involved.



445 new products associated with more than **4512** person-year jobs.



2016-2017 HIGHLIGHTS REPORT



C2MI'S LABORATORIES

C2MI'S LABORATORIES OFFER STATE-OF-THE-ART EQUIPMENT AT THE CUTTING EDGE OF TECHNOLOGY.

SEMICONDUCTOR ASSEMBLY LABORATORY (LAS)

The C2MI laboratories have multiple types of equipment highly specialized devices for assembling semiconductors on a substrate or on an electronic board to make a product ready for assembly. The C2MI installations allow 200mm and 300mm slice thinning and cutting, reverse chip and solder assembly or bonding and component micro-wiring with positioning accuracy of up to 1 micron for all types of integrated circuit components or optoelectronics.



LABORATORY OF INTEGRATION OF MICROSYSTEMS (LIMS)



The C2MI MEMS laboratory has class 10 and class 1 clean rooms on the surface of the slices. The infrastructure is suitable for the micro-machining of surface layer as well as silicon. The C2MI features production lines for first-level assembly as well as MEMS fabrication and advanced packaging on 200mm slices.

[SEARCH FOR EQUIPMENT](#)

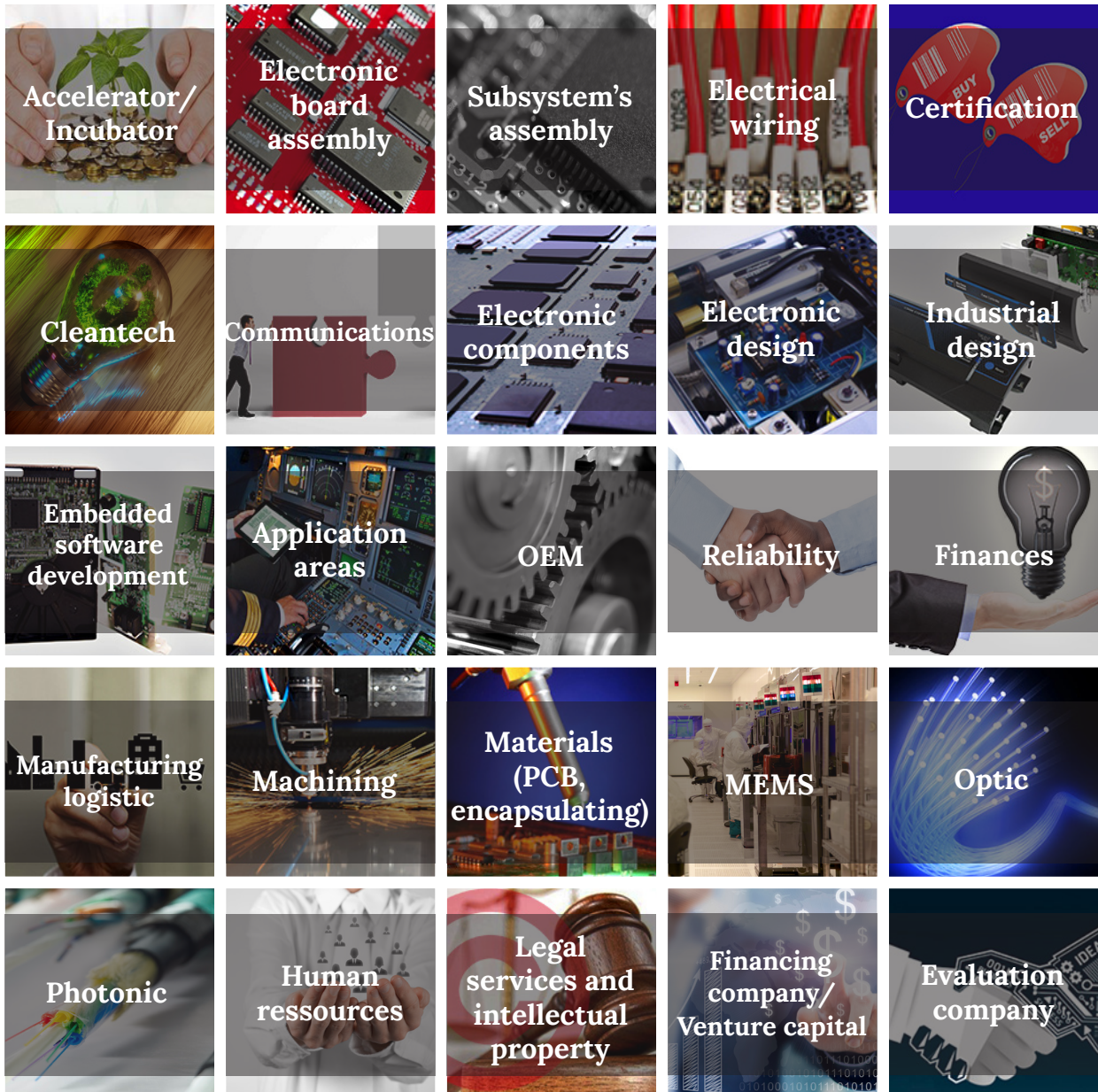
OUR EXPERTISE IN ANALYTICAL SERVICES

- X-RAY TOMOGRAPHY**
- TDR TECHNIQUE**
- ION MILLING**
- THERMOIRÉ**
- PLASMA-FIB**
- THERMAL ANALYSIS - DOC -
TGA**
- THERMAL ANALYSIS - TEA**
- DMA**
- TECHNICAL THERMAL
DESORPTION**
- ACOUSTIC IMAGING -CSCAN**
- TIR TECHNIQUE**
- X-RAY PHOTOELECTRON**
- SPECTROSCOPY - XPS**
- LABORATORY ANALYSIS**
- FAILURE ANALYSIS**

**CONSULT OUR TECHNICAL
DATASHEETS**



OUR FIELDS OF ACTIVITY



SUCCESSFUL PROJECTS WE SUPPORTED



And many more in progress !

FUNDING OPPORTUNITIES

C2MI allows collaboration between the different actors of its ecosystems. In order to foster the growth of the microelectronics industry, C2MI participates in the outreach of organizations whose mission are to contribute to the financing of projects with innovative potential. As the Center of Excellence for Commercialisation and Research (CECR), C2MI provides funding.

**DISCOVER THE AVAILABLE
FUNDING**



OUR SCIENTIFIC TEAM



C2MI is the largest center for research and innovation in microelectronics in Canada. Offering state-of-the-art equipment dedicated mainly to advanced microchip encapsulation and microelectromechanical systems (MEMS), the Center also brings together more than 250 scientists in research and development (R & D). Our team will quickly understand all aspects of your needs. Curiosity, dynamism, and rigor, in addition to technical expertise and industrial experience, are the distinctive strengths of our highly efficient business development team and technical service team.



MiQro Innovation
Collaborative Centre
450 534 8000
info@c2mi.ca

45 boulevard de l'Aéroport
Bromont, QC
Canada
J2L 1S8

